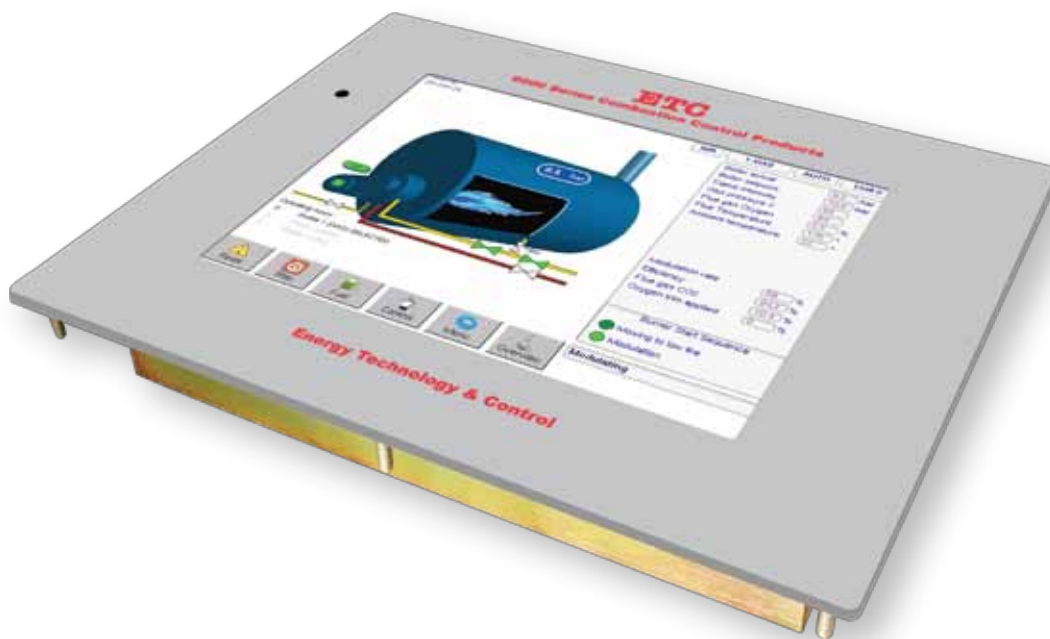


### **TOUCHSCREEN BURNER MANAGEMENT INTERFACE**

The ETC6075 is a state-of-the-art Burner Management Touchscreen Interface that perfectly complements the ETC6000 range of Integrated Burner and Fuel:Air Ratio Controllers.

ETC's wealth of experience, together with market research and customer feedback, has enabled the engineers at ETC to produce an innovative interface that will appeal to all users from installation and commissioning engineers through to the end-users.

The large 10.4" TFT display incorporates all the features of the standard membrane interfaces plus many more. Functionality is no longer restricted by the number of keys or display characters available on a conventional interface. The touchscreen has been developed in line with ETC's philosophy to develop new products that use similar operating conventions to legacy products. Both new and existing users will find the touchscreen intuitive in its use and operation.



The home-screen is a graphical representation of the boiler, burner and fuel delivery system. In addition, the current operating status, the values of any installed pressure or temperature sensors and any alarm conditions are also displayed.

During burner start-up a dedicated pop-up panel appears to indicate progress through the various stages of start-up from proving the closed positions of the drives through to modulation. On burner shutdown a similar panel is also displayed.

'Buttons' at the bottom of the touchscreen allow users to initiate functions such as burner start/stop, fuel selection, control mode, alarm handling as well as entering the various operational modes.

The touchscreen display is a 'blank canvas' allowing ETC to work with its customers to design graphics and screen layouts to their exact specifications and requirements. ETC's OEM customers can have products developed that reflect their unique design philosophies and personalities and incorporate their trademarks and logos. Restrictions previously associated with language character sets such as Russian and Chinese are no longer issues. The touchscreen bezel can also be supplied to suit customer requirements.

Other enhanced features include real-time data logging, Ethernet communications and the option to have a second remote display. A USB port enables operating software to be updated locally.

By entering the password protected commissioning mode, the touchscreen interface allows full burner commissioning to be carried out as well as allowing access to operating parameters that are used to configure the ETC6000 controllers to address a wide range of burner applications.

### ***Features include:***

- Bright 10.4 TFT Touchscreen panel
- 800 x 600 Resolution
- Intuitive Operating System with online help function
- Easy installation using 4-wire CANbus connection
- Four changeover relays for interfacing to third-party systems
- IP65 Rated fascia when installed in boiler control cabinet. (Rear of unit is IP20)
- Password protected commissioning and site operator modes allowing access to all operating parameters
- Multi-language capability
- Graphical representation of all controlled elements
- Automatic backup of all system parameters and profile points enabling data to be uploaded from the touchscreen if a new ETC6000 controller is fitted
- Ethernet capability
- USB port to allow local software downloads and data logging capability
- Real-time data logging with graphical representation
- Extensive alarm and event history
- Connection of second remote touchscreen

For further information on the ETC6075 Touchscreen Burner Management Interface or other products in the ETC6000 range contact ETC at the address below:

### **Energy Technology & Control Ltd.**

25 North Street, Lewes, East Sussex, BN7 2PE, UK

T: +44 (0)1273 480667

F: +44 (0)1273 480652

E-mail: [sales@energytechnologycontrol.com](mailto:sales@energytechnologycontrol.com)

The logo for Energy Technology & Control Ltd. (ETC) consists of the letters 'ETC' in a bold, red, serif font.